



A&R Red Angus

Online Bull & Female Sale

MARCH 17TH-24TH, 2021

Online Through DVAuction

Cattle Viewing & Lunch

MARCH 13TH @ 12 PM

***\$100 sale credit on bulls if you
view animals on viewing day***

**Free delivery up to 500 miles!
Bulls kept till May 1st No charge!
Semen Tested before Delivery!**

**44831 165th Ave
Holdingford, MN 56340**

320-290-7383

Arredangus.com



Dear Cattlemen & Cattlewomen

Welcome to our 1st online bull & female sale. We are excited about the animals we have to offer. We have been focusing on making good maternal cattle with good feet, udders and great disposition without sacrificing performance and high growth. We would like to thank you for taking the time to look at our program and think we have a good offering to move your program in the right direction.

About us, our program is family owned and operated. Father (Russ Klaphake), Wife/Mother (Paula Klaphake) Son (Austin Klaphake) Fiancé/Mother (Leczi Schmidt) Kids/Grandkids (Emelea and Izaak Klaphake) so great disposition is a must. We got started in the Red Angus breed in 2016 when we bought our 1st bred heifer from Nordlund Stock Farms with a few more years after. Most genetics come from Biebers Red Angus as we have bought several bulls, bred cows and bred heifers from their sales. We also have bought bred heifers on the MN State sale from Dahlke's and Turtle River. We have been selling a few bulls private treaty and decided to offer these animals online this year.

About our herd, we work very hard to make great maternal cattle, that go to work as it starts with a great momma cow to produce a good herd bull or a good replacement heifer that will improve any program. We AI all our cows so we can focus on making good maternal cattle with great disposition. We feel that it all starts with the ideal cow that has great feet, leg structure, udder, fertility, great disposition without sacrificing performance. Bulls and heifers are developed slow off a TMR mix for longevity and be structural sound. We take accurate measurements of birth weight, weaning weight, yearling weight, and have all animals DNA tested with enhanced EPD's so we can offer honest and accurate EPD's. Our herd is available anytime for viewing.

The bulls we have to offer are a solid group that will be ready to go to work for you and nothing that we wouldn't be willing to use in our herd! The heifers that we are offering come right off the top of our replacement pen. We focus and work hard towards breeding great cattle and being better seedstock providers for cattlemen and cattlewomen like you. Please let us know if we can help you in any way! Thanks for your interest in our program and we hope to hear from you!

Sincerely, Russ & Austin Klaphake

CATTLE VIEWING:

March 13th, 2021 12PM-5PM
44831 165th Ave Holdingford, MN 56340

SALE CONTACTS:

Austin Klaphake 320-290-7383
Russ Klaphake 320-290-2903

VETERINARIAN:

Freeport Veterinary Service 320-836-2788

PICTURES & VIDEOS:

Pictures and videos available online at arredangus.com or dvauction.com. Or visit our Facebook page A&R Red Angus.

SALE INFORMATION:

Wednesday, March 17th
7:00 AM CDT- Online bidding opens for all lots
Wednesday, March 24th
7:00 PM CDT- Online bidding closes for all lots

SALE BROADCAST:

The sale will be an online only timed auction and broadcast through DVAuction.

AUCTION FORMAT:

The sale will be hosed entirely online at www.DVAuction.com. All lots will close at 7:00 PM CDT on March 24th. If any lot is bid on within 5 minutes prior to 7:00 PM CDT on the closing date, bidding will be extended for an additional 5 mins on all lots. Bidding will then close when there are no bids placed on any lots for a period of 5 minutes.

BIDDING PROCEDURES:

DVAuction

Broadcasting Real-Time Auctions

www.dvauction.com

Watch & Bid online for FREE!

Can't make the sale?

Let DVAuction bring the sale to you!

Busy during the sale?

Let DVAuction represent your bid!

Visit www.dvauction.com and Register!

It's as easy as 1, 2, 3...

1. Create an account at www.dvauction.com under the "create new account" tab
2. Apply for bidding by clicking "apply for bidding" in the upper left corner of your screen, at least 24 hours prior to the auction
3. Tune into the sale and make your purchases!

**For General Questions Please Contact Our Office:
(402) 316-5460 or support@dvauction.com**

***High Speed Internet Access Required**

ABSENTEE BIDDING

If you are unable to bid during the auction time frame, contact one of the sale contacts and we will gladly help you out.

TERMS AND CONDITIONS

Terms of sale are cash or check. No animals will be released from the farm until full payment is made. Cattle will sell according to the terms and conditions suggested by the Red Angus Association of America.

HERD HEALTH

All animals are on a complete vaccination program supervised by Freeport Veterinary Service. All animals are guaranteed to be healthy on viewing day and on delivery day!

GUARANTEE

All bulls in this sale are guaranteed to pass a breeding soundness and health exam. We stand behind our animals 100%. If any issues arise, please let us know right away and we will assist you in any way we can!

SEMEN INTEREST

We are retaining a 1/2 semen interest. We are selling the remaining 1/2 interest, full possession, and full salvage value on these bulls. This collection would be done at the expense of A&R Red Angus, at the buyers convenience. Also at the time of the purchase, the highest bidder on a retained interest bull may elect to purchase exclusive semen rights for 50% of the purchase price in addition to the purchased price on retained bulls. If a buyer elects to purchase exclusive semen rights, A&R Red Angus interest then becomes in herd use only, but A&R Red Angus retains all rights to use the bull within their herd.

FEEDING AND DELIVERY

Bulls will be kept until May 1st at no charge, beyond that we will charge \$2.00 per day. Free delivery up to 500 miles on bulls sold over \$2,500 and at cost beyond 500 miles. Heifers are buyers' responsibility to be picked up. We will assist you in any way we can to get them to you!

SUPPLEMENT SHEET

A supplement sheet will be available prior to sale on www.arredangus.com as well as viewing day. Supplement sheet will include carcass ultrasound data, scrotal circumference, current weights and average daily gain.

INSURANCE

All animals are the owners' risk prior to the sale, once the cattle are sold they become the property of the buyer. We recommend getting insurance on the animals. Seller is responsible for being in contact with buyers about any sick or injured animals.

LIABILITY

Any person attending the cattle viewing does so at their own risk. Neither the owners, or any person connected with this sale assumes any liability, legal or otherwise for any accidents or injuries that happen on the farm.

SALE CREDIT

Receive \$100 sale credit towards a bull if you view cattle on March 13th. We want you to be 100% satisfied with your purchase and believe viewing the cattle prior to the sale is important.

LOT 1: A&R STOCKMARKET H100



DOB:1/15/20

RAAA#: 4298747

ID: H100

BW: 94

ADJ WW: 705

1/29: 1,259 lbs

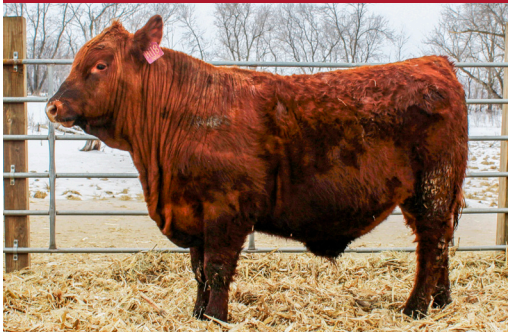
PIE STOCKMAN 4051
BIEBER CL STOCKMARKET E119
BIEBER CL ADELLE 475C
MILWILLAH MARBLE BAR J53
BIEBER DAKEL 240F
BIEBER DAKEL 298C

ProS	HB	GM	CED	BW	WW	YW	MILK	ME	STAY
120	73	47	14	-1.7	71	115	31	4	13

EPD data generated 2/3/21

H100 has been our favorite from day one. His dam did a great job on her first try. H100 is that dark cherry red that everyone loves. He does a lot of things right and he knows it with his "look at me attitude". He is super long, and deep bodied. He moves very smoothly on his great set of legs and feet. You won't want to miss this guy on sale day as he will be a great one to take home!

LOT 2: A&R FOREFRONT H118



DOB:3/6/20

RAAA#:4298741

ID:H118

BW:96

ADJ WW:765

1/29: 1,153 lbs

ANDRAS FUSION R236
BIEBER FOREFRONT B281
BIEBER LAURA 112W
BIEBER LET'S ROLL B563
BIEBER ROSE 305E
BIEBER ROSE 349B

ProS	HB	GM	CED	BW	WW	YW	MILK	ME	STAY
175	91	85	12	-0.5	70	129	29	5	17

EPD data generated 2/3/21

H118 is a powerful Forefront son that is real deep. If you are looking for a bull with growth give this guy a look. With an ADJ WW of 765 lbs and a WW ratio of 111. He will add pounds to your calf crop. H118 is in the top 1% for ProS and GM. His dam has an MPPA of 106. Our Forefront daughters are at the top of our replacement pen.

LOT 3 A&R SPARTACUS H119



DOB:3/6/20

RAAA#:4298717

ID:H119

BW:90

ADJ WW:781

1/29:1,234 lbs

BIEBER ROUSE SAMURAI X22
BIEBER SPARTACUS A193
BIEBER TILLY 233U
BIEBER ROOSEVELT W384
BIEBER LAURA 189Z
BASIN LAURA 7535

ProS	HB	GM	CED	BW	WW	YW	MILK	ME	STAY
122	62	59	13	-1.7	79	124	24	5	10

EPD data generated 2/3/21

H119 does everything right and probably should have been lot 1. He is very deep soggy with a ton of muscle. He moves very smoothly on some perfect feet. He weaned off at 751 lbs actual weight with 113 WW ratio. This Spartacus son is one you really want to take a look at March 13th.

LOT 4 A&R HARD DRIVE H102



DOB:2/21/20

RAAA#:4298749

ID:H102

BW:88

ADJ WW:696

1/29: 1,061 lbs

BIEBER HARD DRIVE Y120
BIEBER HARD DRIVE E640
BIEBER LASS 241Y
PIE STOCKMAN 4051
BIEBER ROSE 544F
BIEBER ROSE 475A

ProS	HB	GM	CED	BW	WW	YW	MILK	ME	STAY
147	88	59	11	-1.2	81	120	28	9	15

EPD data generated 2/3/21

H102 had to do it all on his own as his dam broke her leg prior to calving. This bull is big ribbed with a good set of feet. He is in the top 5% for ProS, WW, YW, HPG, Marb and CW. If you are looking for a great female maker you need to take a look at this guy. His Grand Dams are two great cows that are donors Bieber Lass 241Y on the top side and Bieber Rose 475A on the bottom.

LOT 5: A&R LETS ROLL H111



DOB:2/29/20

RAAA#:4298723

ID:H111

BW:69

ADJ WW:589

1/29: 986 lbs

BIEBER ROLLIN DEEP Y118
BIEBER LET'S ROLL B563
BASIN PRIMROSE 2043
SCHULER ENDURANCE 2101Z
BIEBER GALLEE 136B
BIEBER GALLEE 126Z

ProS	HB	GM	CED	BW	WW	YW	MILK	ME	STAY
162	107	56	19	-6.0	48	86	27	4	19

EPD data generated 2/3/21

This bull is the most calving ease bull we are offering on the sale. You will be able to sleep all night when his calves start making their appearance. He has a -6.1 BW, 19 CED and a very clean and smooth front end. He is dark cherry red and is flat across his back.

LOT 6 A&R STOCKMARKET H117



DOB:3/6/20

RAAA#:4298739

ID:H117

BW:92

ADJ WW:728

1/29: 1,050 lbs

PIE STOCKMAN 4051
BIEBER CL STOCKMARKET E119
BIEBER CL ADELLE 475C
BIEBER FEDERALIST B543
BIEBER KANNA 169E
BIEBER KANNA 356C

ProS	HB	GM	CED	BW	WW	YW	MILK	ME	STAY
142	73	68	10	-1.2	70	118	29	8	14

EPD data generated 2/3/21

H117 is another Stockmarket son that is dark cherry red. The Stockmarket progeny have been doing a really great job. He has an ADJ WW of 728 lbs with a WW ratio of 105. His dam has done a great job for us as she put her first heifer calf in the replacement pen and now put H117 on our first sale.

LOT 7: A&R DRIVEN H126



DOB:4/3/20

RAAA#:4298743

ID:H126

BW:76

ADJ WW:643

1/29: 919 lbs

BIEBER DRIVEN C540
BIEBER DRIVEN F427
BIEBER PRIMROSE 222B
RED BENCHMARK TRANSITION 10-14
ELLIE MAE
NSFR MTX C104

ProS	HB	GM	CED	BW	WW	YW	MILK	ME	STAY
147	102	45	13	-3.5	56	91	30	-2	18

EPD data generated 2/3/21

H126 is out of our herd bull Bieber Driven F427. F427 was our pick in Biebers 2019 Production Sale. We feel he will make some nice calves with power. H126 Dam is a Benchmark Transition 10-14 daughter who has a perfect udder and has a bright future in our herd. H126 has the 2nd lowest BW in this offering with a -3.5 BW. Don't overlook this guy.

LOT 8: A&R DRIVEN H128



DOB:5/4/20

RAAA#:4298735

ID:H128

BW:92

ADJ WW:702

1/29: 905 lbs

BIEBER DRIVEN C540
BIEBER DRIVEN F427
BIEBER PRIMROSE 222B
FEDDES BIG SKY R9
DAHLKE MS. HARVEST HONEY 7D
DAHLKE MS. BYRDIE 233B

ProS	HB	GM	CED	BW	WW	YW	MILK	ME	STAY
147	81	66	10	-0.9	78	124	29	4	15

EPD data generated 2/3/21

H128 is another one out of our herd bull. H128 is out of a beautiful cow we bought on the state sale from Dahlke Red Angus. H128 looks identical to his paternal brother H126. H128 has more growth with being in the top 3% of WW and top 4% of YW.

LOT 9: A&R ZING H123



DOB:3/23/20

RAAA#:4298745

ID:H123

BW:90

ADJ WW:728

1/29: 976 lbs

LSF MEW X-CITEMENT 6690D
NSFR ZING F121
C15 NSFR
HXC ALLEGIANCE 5502C
NSFR VERDALE F33
NELS VERDALE 13C

ProS	HB	GM	CED	BW	WW	YW	MILK	ME	STAY
125	57	68	10	0.6	76	126	27	6	14

EPD data generated 2/3/21

H123 is a short and stocky bull. He is out of a cow we bought from Nordlund Stock Farm last spring for our daughter. H123 is in the top 4% for WW and top 3% for YW. H123 will sell as commercial as his sire passed away before a DNA test was able to get processed.

LOT 10: A&R ROSE VERA 105H



DOB:2/29/20

RAAA#:4298733

ID:105H

BW:72

ADJ WW:562

1/29: WT*

ANDRAS FUSION R236
BIEBER FOREFRONT B281
BIEBER LAURA 112W
HXC BIG IRON 0024X
NSFR ROSE VERA C34
NSFR ROSE VERA X243

ProS	HB	GM	CED	BW	WW	YW	MILK	ME	STAY
147	63	84	12	-1.6	61	114	22	8	14

EPD data generated 2/3/21

105H is one of the heifers that was suppose to be on the MN State Sale that got canceled. 105H is out of Rose Vera C34 who we bought from Nordlund Stock Farm. 105H is a well put together heifer that is long and smooth with lots of power like her dam. She will make a great cow for any herd so don't miss her on sale day.

LOT 11: A&R MTX 106H



DOB:2/29/20
RAAA#:4298731
ID: 106H
BW:77
ADJ WW:617
1/29: WT*

BIEBER ROLLIN DEEP Y118
BIEBER LET’S ROLL B563
BASIN PRIMROSE 2043
SIX MILE ZERO GRAVITY 69Z
NSFR MTX C104
NSFR MTX Z104

ProS	HB	GM	CED	BW	WW	YW	MILK	ME	STAY
136	84	52	10	-1.2	61	102	30	1	18

EPD data generated 2/3/21

106H is the other heifer that was suppose to be on the MN State Sale. 106H is a Lets Roll daughter that we feel does a lot of things right. She is dark cherry red with lots of rib and easy fleshing. She is out of MTX C104 who has 2 daughters in our herd allowing us to offer this one. 106H dam is good footed, uddered and we think 106h will follow. 106H will be ready to go to work for you!



NOTES





A&R Red Angus

44831 165th Ave

Holdingford, MN 56340